



AD Information Sync 3.0

User Guide

Copyright

Copyright © 2022 BoostSolutions Co., Ltd. All rights reserved.

All materials contained in this publication are protected by Copyright and no part of this publication may be reproduced, modified, displayed, stored in a retrieval system, or transmitted in any form or by any means, electronic, mechanical, photocopying, recording or otherwise, without the prior written consent of BoostSolutions.

Our web site: <https://www.boostsolutions.com/>

Contents

1. Introduction.....	1
2. Installation	3
2.1 Product Files	3
2.2 Software Requirements	4
2.3 Installation	5
2.4 Upgrade	7
2.5 Uninstallation	7
2.6 Command Line Installation	7
2.7 Feature Activation.....	10
3. How to Use AD Information Sync	12
3.1 Entering the AD Information Sync Settings Page	12
3.2 Manage Profile.....	12
3.2.1 Create a Profile	12
3.2.2 Edit a Profile	19
3.2.3 Delete a Profile	20
3.3 Start Synchronization	20
3.3.1 Manual Sync	20
3.3.2 Auto Sync	21
3.4 Manage Log Files	22
3.4.1 View a Log File.....	22
3.4.2 Download a Log File.....	22
3.4.3 Delete Log Files.....	23
3.4.4 Filter Log Files.....	23
3.5 Export/Import Settings	23
3.5.1 Export Settings from a Profile.....	23
3.5.2 Import Settings from a Profile	23
4. Supported Attributes	26
5. Troubleshooting & Support.....	33
5.1 Frequently Asked Questions.....	33
5.2 Contact Us	35
Appendix: License Management	36

1. Introduction

Product Introduction

SharePoint AD Information Sync provides a quick and convenient way to synchronize information from Active Directory to SharePoint lists based on a profile; you can synchronize information manually or automatically by schedule. AD Information Sync supports two-way synchronization where changes made in list can be synced to Active Directory and vice versa.

Product Feature List

- Sync information from AD to SharePoint lists, including User Information List
- Supports AD User, Computer and Contact objects
- Map columns between AD fields and SharePoint list columns
- Sync manually or automatically by schedule
- Supports popular Active Directory attributes
- Supports Exchange and extended attributes
- Sync modifications made in SharePoint list to Active Directory
- Sync information by specified OUs
- Supports customized LDAP query to filter information accurately
- Import/export sync profiles
- Log all sync activities
- Sync photos from Active Directory to SharePoint Contact List

Differences between version 2.0 and 3.0

- After you upgrade from Version 2.0 to Version 3.0, the Exclude Items settings in Version 2.0 will be converted into LDAP queries and placed in the **Filter** section. You can use LDAP queries to exclude items or users.
- After upgrading to version 3.0, log files older than 180 days will be automatically deleted from the server.

About this User Guide

This user guide is intended to instruct you on how to install/uninstall, configure and use SharePoint AD Information Sync. For the latest copy of this user guide and other guides, please visit:

<https://www.boostsolutions.com/download-documentation.html>

2. Installation

2.1 Product Files

After you download and unzip the AD Information Sync zip file from <https://www.boostsolutions.com>, you will find the following files:

Path	Descriptions
Setup.exe	A program that installs and deploys the WSP solution packages to the SharePoint farm.
EULA.rtf	The product End-User-License-Agreement.
AD Information Sync_V3_User Guide.pdf	User guide for AD Information Sync in PDF format.
Library\4.0\Setup.exe	The product installer for .Net Framework 4.0.
Library\4.0\Setup.exe.config	A file that contains the configuration information for the installer.
Library\4.6\Setup.exe	The product installer for .Net Framework 4.6.
Library\4.6\Setup.exe.config	A file that contains the configuration information for the installer.
Solutions\Foundation\BoostSolutions.FoundationSetup15.1.wsp	A SharePoint solution package that contains Foundation files and resources for SharePoint 2013 or SharePoint Foundation 2013.
Solutions\Foundation\BoostSolutions.FoundationSetup16.1.wsp	A SharePoint solution package that contains Foundation files and resources for SharePoint 2016/2019/Subscription Edition.
Solutions\Foundation\Install.config	A file that contains the configuration information for the installer.
Solutions\ADInformationSync\BoostSolutions.ADSyncSetup15.3.wsp	A SharePoint solution package that contains AD Information Sync files and resources for SharePoint 2013 or SharePoint Foundation 2013.

Solutions\ ADInformationSync\ BoostSolutions.ADSyncSetup16.3.wsp	A SharePoint solution package that contains AD Information Sync files and resources for SharePoint 2016/2019/Subscription Edition.
Solutions\ADInformationSync\ \Install.config	A file that contains the configuration information for the installer.

2.2 Software Requirements

Before you install AD Information Sync, ensure your system meets the following requirements:

SharePoint Server Subscription Edition

Operating System	Microsoft Windows Server 2019 Standard or Datacenter Microsoft Windows Server 2022 Standard or Datacenter
Server	Microsoft SharePoint Server Subscription Edition
Browser	Microsoft Edge Mozilla Firefox Google Chrome

SharePoint 2019

Operating System	Windows Server 2016 Standard or Datacenter Windows Server 2019 Standard or Datacenter
Server	Microsoft SharePoint Server 2019
Browser	Microsoft Internet Explorer 11 or greater Microsoft Edge Mozilla Firefox Google Chrome

SharePoint 2016

Operating System	Microsoft Windows Server 2012 Standard or Datacenter X64 Microsoft Windows Server 2016 Standard or Datacenter
Server	Microsoft SharePoint Server 2016 Microsoft .NET Framework 4.6

Browser	Microsoft Internet Explorer 10 or greater Microsoft Edge Mozilla Firefox Google Chrome
---------	---

SharePoint 2013

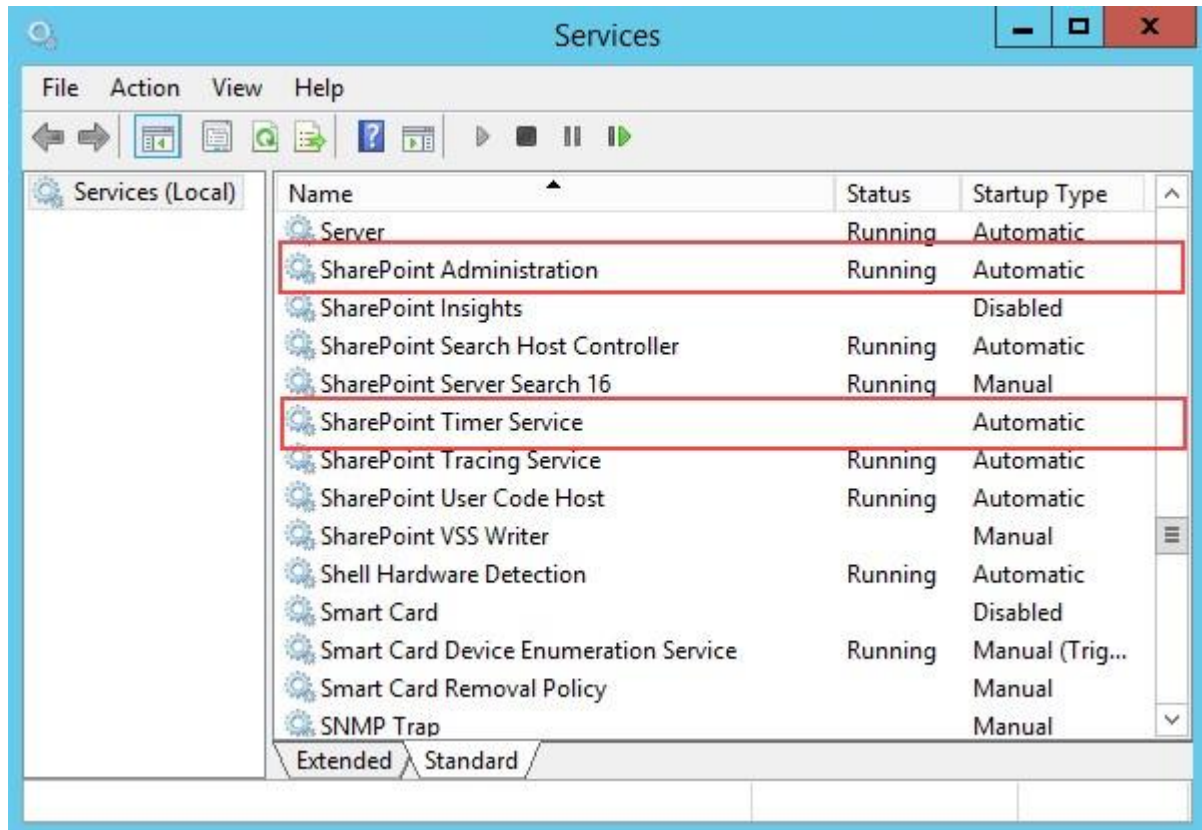
Operating System	Microsoft Windows Server 2012 Standard or Datacenter X64 Microsoft Windows Server 2008 R2 SP1
Server	Microsoft SharePoint Foundation 2013 or Microsoft SharePoint Server 2013 Microsoft .NET Framework 4.5
Browser	Microsoft Internet Explorer 8 or greater Microsoft Edge Mozilla Firefox Google Chrome

2.3 Installation

Follow these steps to install AD Information Sync on your SharePoint servers.

Installation Preconditions

Before you start installing the product, please make sure these services are started on your SharePoint servers: **SharePoint Administration** and **SharePoint Timer Service**.



AD Information Sync must be run on one front-end Web server in the SharePoint farm where **Microsoft SharePoint Foundation Web Application services** are running. Check **Central Administration → System Settings** for a list of servers running this service.

Required Permissions

To perform this procedure, you must meet either of the following requirements:

- ✦ Member of the local server's **Administrators** group.
- ✦ Member of the **Farm Administrators** group.

To install AD Information Sync on SharePoint server

- a. Download the zip file (*.zip) of the product of your choice from the BoostSolutions website, then extract the file.
- b. Open the created folder and run the **Setup.exe** file.

Note If you cannot run the setup file, please right click the **Setup.exe** file and choose **Run as administrator**.

- c. A system check is performed to verify if your machine meets all the requirements for installing the product. After the system check is finished, click **Next**.
- d. Review and accept the End-User License Agreement and click **Next**.
- e. In the **Web Application Deployment Targets**, select the web applications you are going to install and click **Next**.

Note If you select **Automatically activate features**, the product features will be activated in the target site collection during the installation process. If you want to manually activate the product feature later, uncheck this box.

- f. Upon completion of the installation, details are displayed showing which web applications you product has been installed to. Click **Close**.

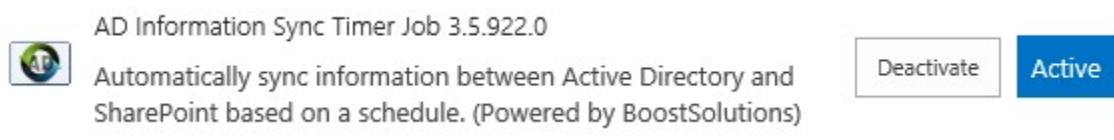
2.4 Upgrade

Download the latest version of our product and run the **Setup.exe** file.

In the **Program Maintenance** window, select **Upgrade** and click **Next**.

2.5 Uninstallation

Before uninstall product, you need to deactivate the AD Information Sync Timer Job on all web application.



And then double-click the **Setup.exe** file.

In the **Repair or Remove** window, select **Remove** and click **Next**. Then the application will be removed.

2.6 Command Line Installation

The following instructions are for installing the solution files for AD Information Sync in **SharePoint 2016** by using the SharePoint STSADM command line tool.

Required permissions

To use STSADM, you must be a member of the local Administrators group on the server.

Install AD Information Sync on SharePoint Server

- a. Extract the files from the product zip pack to a folder on one SharePoint server.
- b. Open a command prompt and make sure your path is set with the SharePoint bin directory.

- **SharePoint 2016/2019**

C:\Program Files\Common Files\Microsoft Shared\Web Server Extensions\16\BIN

- **SharePoint 2013**

C:\Program Files\Common Files\Microsoft Shared\Web Server Extensions\15\BIN

- c. Add the solution files to SharePoint in the STSADM command line tool.

```
stsadm -o addsolution -filename BoostSolutions.ADInformationSyncSetup16.3.wsp  
stsadm -o addsolution -filename BoostSolutions.FoundationSetup16.1.wsp
```

- d. Deploy the added solution with the following command:

```
stsadm -o deploysolution -name BoostSolutions.ADInformationSyncSetup16.3.wsp  
-allowgacdeployment -url [virtual server url] -immediate  
stsadm -o deploysolution -name BoostSolutions.FoundationSetup16.1.wsp -  
allowgacdeployment -url [virtual server url] -immediate
```

- e. Wait for the deployment to complete. Check the final status of the deployment with this command:

```
stsadm -o displaysolution -name BoostSolutions.ADInformationSyncSetup16.3.wsp  
stsadm -o displaysolution -name BoostSolutions.FoundationSetup16.1.wsp
```

The result should contain a <Deployed> parameter for which the value is TRUE.

- f. In the STSADM tool, activate the features.

```
stsadm -o activatefeature -name BoostSolutions.ADInformationSync -url [site collection url]  
-force
```

```
stsadm -o activatefeature -name BoostSolutions.ADInformationSync.TimerJob -url [virtual server url] -force
```

Note:

After install product using command line, you can check whether the product is installed and deployed successfully in Central Administration.

- a. On the Central Administration Home page, click **System Settings**.
- b. In the Farm Management section, click **Manage farm solutions**.
- c. On the Solution Management page, check whether the solution "boostsolutions.adinformationsyncsetup16.3.wsp" is deployed to the web applications.
- d. On the Solution Properties page, click **Deploy Solution**.
- e. On the Deploy Solution page, in the Deploy When section, select **Now**.
- f. In the Deploy To? section, in the A specific web application list, click either All web applications or select a specific Web application.
- g. Click **OK**.

Remove AD Information Sync from SharePoint Servers

- a. Removal is initiated with the following command:

```
stsadm -o retractsolution -name BoostSolutions.ADInformationSyncSetup16.3.wsp -immediate -url [virtual server url]
```

```
stsadm -o retractsolution -name BoostSolutions.FoundationSetup16.1.wsp -immediate -url [virtual server url]
```

- b. Wait for the removal to finish. To check the final status of the removal you can use the following command:

```
stsadm -o displaysolution -name BoostSolutions.ADInformationSyncSetup16.3.wsp  
stsadm -o displaysolution -name BoostSolutions.FoundationSetup16.1.wsp
```

The result should contain the <Deployed> parameter for which the value is FALSE and the <LastOperationResult> parameter with the RetractionSucceeded value.

- c. Remove the solution from the SharePoint solutions storage:

```
stsadm -o deletesolution -name BoostSolutions.ADInformationSyncSetup16.3.wsp  
stsadm -o deletesolution -name BoostSolutions.FoundationSetup16.1.wsp
```

Note:

After uninstall product using command line, you can check whether the product is removed and successfully in Central Administration.

- a. On the Central Administration Home page, click **System Settings**.
- b. In the Farm Management section, click **Manage farm solutions**.
- c. On the Solution Management page, click "boostsolutions.adinformationsyncsetup16.3.wsp".
- d. On the Solution Properties page, click **Retract Solution**.
- e. On the Retract Solution page, in the Deploy When section, select **Now**.
- f. In the Retract From section, in the A specific web application list, click All content web applications.
- g. Click **OK**.
- h. Wait a minute, and refresh the browser until you see "Not Deployed" as the status for boostsolutions.adinformationsyncsetup16.3.wsp.
- i. Select "boostsolutions.adinformationsyncsetup16.3.wsp".
- j. On the Solution Properties page, click **Remove Solution**.

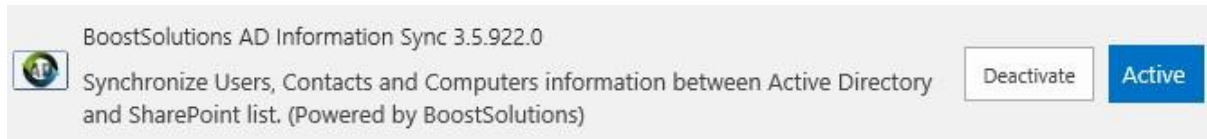
2.7 Feature Activation

Activate Feature in Site Collection

By default, the application's features are automatically activated once the product is installed. You can also activate the product feature manually.

- a. Click **Settings**  and then click **Site Settings**.
- b. Under **Site Collection Administration**, click **Site collection features**.

- c. Find the application feature and click **Activate**. After the feature is activated, the Status column lists the feature as **Active**.



Activate Feature in Central Administration


- a. On the Quick Launch, click **Application Management**.
- b. On the **Application Management** page, under **Manage Applications**, click **Manage Web applications**.
- c. Select a web application you want to configure and click **Manage Features** on the ribbon.
- d. Find AD Information Sync's features and click **Activate**. After a feature is activated, the Status column lists the feature as **Active**.



3. How to Use AD Information Sync

To configure the settings of AD Information Sync, ensure you have the following permissions: Manage Web Site, Manage Lists, Add Items, Edit Items, Delete Items and View Items.

3.1 Entering the AD Information Sync Settings Page

- Click **Settings**  and then click **Site Settings**.
- On the **Site Settings** page, under **BoostSolutions Software**, find **AD Information Sync settings** and click on it to access the AD Information Sync's settings page.

3.2 Manage Profile

3.2.1 Create a Profile

On the **AD Information Sync Settings** page, click **Create Profile**.

AD Information Sync Settings

A sync profile stores configuration settings for synchronization between Active Directory and a SharePoint list. page to manage profiles on this site.

Profile Name(click to edit)	Active Directory	List	Schedule Type	Last Modified By
Create profile				
Import settings from a profile				

Note

When you create a profile, ensure there is a list in the site. Otherwise, an error will occur when you click **Create Profile**.

In the **Create Profile** page, configure the following settings:

- Profile Name
- List
- Active Directory

- Filter
- Column Mapping
- Sync Options
- Sync Schedule
- Log

Profile Name

In the **Profile Name** section, enter a name for your profile.

Profile Name

Sync Employee Information *

Provide a unique name for this profile.

Select a List

In the **List** section, select a SharePoint list in which you want to store your Active Directory information.

List

User Information



Select a SharePoint list to synchronize information to.

You can sync Active Directory information to these list types: Custom List, Task, Calendar, Announcement, Custom List in Datasheet View, Issue Tracking, Project Tasks and Discussion Board and Contacts.

You can also sync information to SharePoint User Information List.

Active Directory

Active Directory

Specify a domain server and user credentials to connect to the domain server. (Ensure the user account you specify has the appropriate permissions to access the domain server.)

Note: To sync changes back to Active Directory, the user account must be a member of Domain Admins group.

Domain Server: (domain name, server name or IP address)

br *

Username:

administrator *

Password:

●●●●●●●● *

Connect

Connection attempt successful.

In the **Active Directory** section, specify user credentials to connect to a domain server as follows:

- Specify the domain name, **server name** or **IP address** of the Domain server in the **Domain Server** text box.
- Specify the username and password.
 - If you sync information from Active Directory to list, the account you specify should be a member of the domain.
 - If you plan to sync information from list to Active Directory, the specified account must belong to the **Domain Admin** group.
- Click **Test Connection** to test whether the connection is successful.

Filter

In the **Filter** section, you can choose what AD objects should be synchronized. AD objects can be filtered based on Organizational Units or by entering LDAP query sentences.

Note: If you do not select either of these options, all information in the domain will be synchronized to the list. Also, regardless of whether you select an option or not, you must select an Object type from the drop-down list (User, Contact, Computer or User & Contact).

To filter information by Organizational Unit:

Select the **Filter by Organizational Unit** option and select the organizational units that you want to synchronize.

☒ Filter by Organizational Unit

Select the object type you want to synchronize, User, Contact, Computer, or User & Contact.

Object Type:

Follow these steps to filter information by LDAP query:

- a. Select the **Enable Query** option and configure the query string. You can create a query filter using **Custom Search** or **Enter LDAP query**.

Custom Search

The **Custom Search** option allows you to add multiple conditions to filter information.

☒ Enable Query

☒ Custom Search

- i. In the first column, select an Active Directory attribute.
- ii. In the second column, select an operator.
- iii. In the third column, specify a value.
- iv. To add more filter strings, click and specify the logic operator (And or Or).
- v. To remove the filter string, click .

Enter LDAP Query

The **Enter LDAP Query** option allows you to enter LDAP statements.

☒ Enter LDAP Query

```
(&(objectCategory=person)(objectClass=user)
(userAccountControl:1.2.840.113556.1.4.803:=2))
```

Column Mapping

In the **Column Mapping** section, select an AD attribute from the drop-down list and map it to the SharePoint list column. The AD attribute value is stored in the column after synchronization.

Column Mapping

Select Active Directory attributes and map to SharePoint list columns.

List Column	AD Attribute	
Address	Street Address(streetAddress)	▼
Business Phone	Telephone Number(telephoneNumber)	▼
City	City(l)	▼
Company	Company(company)	▼
Country/Region	Country/Region(co)	▼
Email Address	E-Mail(mail)	▼
Fax Number	Fax Number(facsimileTelephoneNumber)	▼
First Name	First Name(givenName)	▼
Full Name	Display Name(displayName)	▼

Sync Custom Attribute

To sync an Active Directory attribute that is not available in the drop-down list, select **Enter an AD attribute** from the drop-down list and then enter the attribute LDAP name.

Account Expiration	(Enter an AD attribute) ▼
	accountExpires

AD Information Sync supports almost all Active Directory attributes. For more details, see chapter [4. Supported Attributes](#).

Sync Photo Attribute

- To sync thumbnail photos to the SharePoint Contacts list, select the **Sync Contact Picture** option. Note that you can only see this option when the list type is **Contact**.

☒ Sync Contact Picture (this picture can be synced to Outlook contact when you connect SharePoint contact list to Outlook)

Select a Picture ▼

- To sync the photo attribute to a non-contact list, you must map the photo attribute to a list column (Hyperlink or Picture) as follows:

Picture ▼

If the photo does not appear in the list after synchronization, make sure the **Format URL as** option is set to **Picture**.

Note

- Currently, AD Information Sync supports all standard column types except: Lookup, KPI, Calculated, Business Data and Managed Meta Data columns. Unsupported columns will not show up in the Column Mapping section.
- For some attributes, the changes made in list cannot be synced to Active Directory; an ⓘ icon will appear next to the attribute. To view these attributes, see chapter [4. Supported Attributes](#).
- AD Information Sync stores AD pictures as an attachment to an item. You will need to enable the Attachment feature in the list (go to **List Settings** -> **Advanced Setting** -> **Attachments**).

Sync Options

In the **Sync Options** section, specify whether to create or delete list items when AD objects are created or deleted and how to sync changes when information is modified in Active Directory or SharePoint.

Sync Options

☒ Create list items when AD items are created

Specify whether to create or delete list items during synchronization.

☐ Delete list items when AD items are deleted

You can choose whether to sync changes back to Active Directory, and decide what to do when conflicts occur.

☐ Sync changes from list to Active Directory ⓘ

- Create list items when AD items are created:** when an AD object is created, a new item will be created in the list.

The first time you add a profile, you must select this checkbox. Otherwise the list will not be populated with items from AD.

- Delete list items when AD items are deleted:** when an AD item is deleted, the corresponding item in the list will be deleted.

- **Update changes and decide what to do when list items or AD objects are modified:** sync any modifications made in SharePoint or Active Directory.

Note

If you do not select this option, AD Information Sync will always sync changes from Active Directory to SharePoint list.

When you **select** this option, you must decide how to sync changes.

☒ Sync changes from list to Active Directory ⓘ

Conflict settings (select what to do if item(s) are changed in both AD and list)

- ☒ Use the last modified item
- ☐ Sync from AD to list
- ☐ Sync from list to AD

- **Use the last modified items/objects:** compare the modifications between SharePoint list and AD and sync the last modifications to list or Active Directory.
- **Sync from AD to list:** always update list items with AD modifications.
- **Sync from list to AD:** always update AD objects with list modifications.

Sync Schedule

The **Sync Schedule** section allows you to specify if information is synced automatically in the background based on a sync schedule.

The settings of the Sync Schedule take effects only when the **AD Information Sync Timer Job** is activated in Central Administration.

To activate the AD Information Sync Timer Job, see chapter [2.7 Feature Activation](#).

In the **Sync Schedule** section, you can specify the synchronization schedule as follows:

Sync Schedule

A timer job runs in the background to check profiles and synchronize information between Active Directory and SharePoint. Set a schedule to indicate how often the job should be performed for this profile.

Note: These settings will only take effect when the AD Information Sync Timer Job has been activated.

- ☐ Sync manually
 - ☒ Sync every minutes (1-59)
 - ☐ Sync hourly
 - ☐ Sync daily
- Between AM and AM

- **Sync manually:** Sync information only when the **Sync Now** button is clicked on the **AD Information Sync Settings** page.
- **Sync every n minutes (1-59):** Perform synchronizations every n minutes. If there is a lot of Active Directory information to sync, the sync interval should be set further apart.
- **Sync hourly:** Perform synchronizations every hour.
- **Sync daily:** Sync information every day. You can set the time range, for example, between 12AM and 1PM.

Log

- In the **Log** section, select **Enable logging**.
- Specify the number of days when logs should be deleted.

Log

Specify whether to enable logging in this profile. If logging is enabled, you must set the number of days when log files will be deleted.

☒ Enable logging

Delete log files from the server after days

[View Logs](#)

c.

To view logs, click the **View Logs** button.

For log file management, see [3.7 Manage Log Files](#).

3.2.2 Edit a Profile

You can edit a Sync Profile after it is added to the AD Information Sync settings page.

- On the **AD Information Settings** page, click the profile name or click **Edit** to enter the **Edit Profile** page.

AD Information Sync Settings

A sync profile stores configuration settings for synchronization between Active Directory and a SharePoint list. Use this page to manage profiles on this site.

Profile Name(click to edit)	Active Directory List	Schedule Type	Last Modified By	Action	
Profile	br	User Information	Manually	Annette Young	Sync Now Edit Export

[Create profile](#)

- On the **Edit Profile** page, make your changes to the profile and then click **OK** to save it.

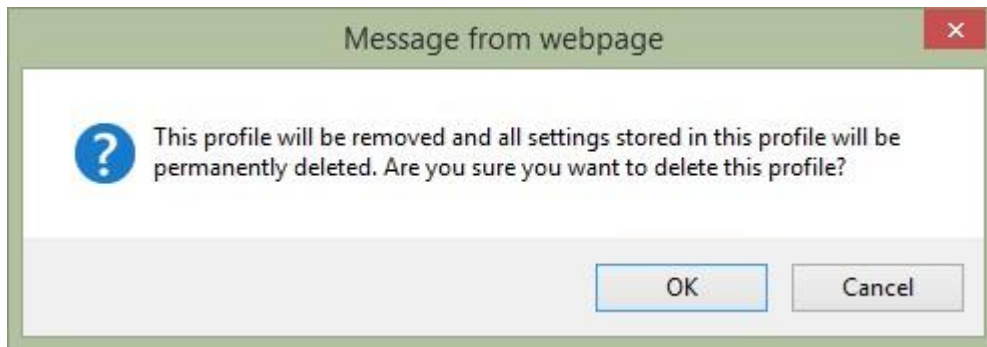
Note

- If the current user is not the user who last modified the profile, then a password is required to connect the domain server to AD.
- If you modify the column mapping settings, the new value will overwrite the existing values.

3.2.3 Delete a Profile

You can delete a profile after it is added to the AD Information Sync settings page.

- On the **AD Information Settings** page, select a profile and click **Delete**.
- A confirmation message will appear. Click **OK** to delete the sync profile.

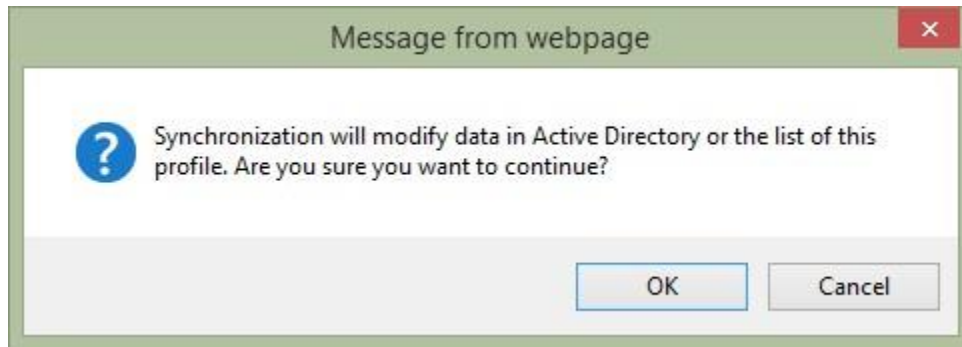


3.3 Start Synchronization

3.3.1 Manual Sync

Once a profile is created, you can sync the information manually. To run a sync profile, follow these steps:

- Go to the **AD Information Sync Settings** page and find the profile you want to run. Click **Sync Now**.
- A confirmation message will appear. Click **OK** to continue.



- c. After the synchronization is completed, a pop-up window will open highlighting the Synchronization Status. In this window, you can click **View Log** to view the details of the synchronization.
- d. Click **OK** to close the window.

3.3.2 Auto Sync

By default, the sync schedule is set to Sync manually. To perform synchronizations automatically, you must specify sync schedule by minutes, hourly or daily in the **Sync Schedule** section in the profile.

Sync Schedule

A timer job runs in the background to check profiles and synchronize information between Active Directory and SharePoint. Set a schedule to indicate how often the job should be performed for this profile.

Note: These settings will only take effect when the AD Information Sync Timer Job has been activated.

☐ Sync manually
☐ Sync every minutes (1-59)
☒ Sync hourly
☐ Sync daily
 Between AM
 and AM

A timer job will run in Central Administration and sync the information based on the schedule you set.

History

Job Title	Server	Web Application	Duration (hh:mm:ss)	Status	Complete
Migration Job	FARM12	SharePoint - 80	0:00:29	Succeeded	10/24/2012
Application Server Timer Job	FARM12		0:00:00	Succeeded	10/24/2012
Storage Metrics Processing	FARM12	SharePoint - 803	0:00:00	Succeeded	10/24/2012
Upgrade site collections job	FARM12	SharePoint - 80	0:00:27	Succeeded	10/24/2012
Search Custom Dictionaries Update	FARM12		0:00:01	Succeeded	10/24/2012
Storage Metrics Processing	FARM12	SharePoint - 8888	0:00:00	Succeeded	10/24/2012
BoostSolutions AD Information Sync Job	FARM12	SharePoint - 8888	0:01:44	Succeeded	10/24/2012

3.4 Manage Log Files

To manage sync logs, On the **AD Information Settings** page, click the profile name or click **Edit** to enter the **Edit Profile** page. In the **Log** section, click **View Logs**.

Log ☒ Enable logging

Specify whether to enable logging in this profile. If logging is enabled, you must set the number of days when log files will be deleted.

Delete log files from the server after days

[View Logs](#)

In the **View Logs** window you can view, download and delete log files as well as filter log files by date.

View Logs

[X Delete](#)
[Filter by Date](#)

<input type="checkbox"/> File Name (Click to view)	Created By	Created	Size	
<input type="checkbox"/> ADSync-20141009-165918.log	Annette Young	10/9/2014 16:59:18	548 KB	Download
<input type="checkbox"/> ADSync-20141009-164236.log	System Account	10/9/2014 16:42:36	1 KB	Download
<input type="checkbox"/> ADSync-20141009-163639.log	System Account	10/9/2014 16:36:39	1 KB	Download
<input type="checkbox"/> ADSync-20141009-163104.log	System Account	10/9/2014 16:31:04	1 KB	Download
<input type="checkbox"/> ADSync-20141009-162849.log	System Account	10/9/2014 16:28:49	557 KB	Download

3.4.1 View a Log File

- To view a log file, click on the file name.
- A window will open where you can view the log details. To return to the previous window, click **Cancel**.

3.4.2 Download a Log File

- Select the log file you want to download and then click **Download**.
- Locate the folder in which you want to save the profile file and click **Save**. Alternatively you can open the log file directly.

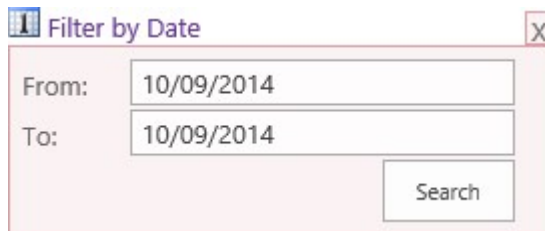
Do you want to open or save **Profile_Profile.brp** from **product2013**?

3.4.3 Delete Log Files

- a. Select the log files you want to delete and then click **Delete**.
- b. A confirmation message will appear. Click **OK** to delete the log file.

3.4.4 Filter Log Files

- a. To filter log files by date, click **Filter by Date**.
- b. Specify the time range and then click **Search**.



Filter by Date

From: 10/09/2014

To: 10/09/2014

Search

3.5 Export/Import Settings

3.5.1 Export Settings from a Profile

- a. On the **AD Information Sync Settings** page, select a profile and click **Export**.
- b. Locate the folder in which you want to save the profile file and click **Save**. The profile will be saved as a .brp format.

Note

For security, the exported profiles will not contain any user credential information.

3.5.2 Import Settings from a Profile

AD Information Sync provides a quick and easy way to create a profile by importing settings from an existing profile.

- a. On the **AD Information Sync Settings** page, click **Import settings from a profile**.

AD Information Sync Settings

A sync profile stores configuration settings for synchronization between Active Directory and a SharePoint

Profile Name(click to edit)	Active Directory	List
Profile	br.local	HR Information

[Create profile](#)

[Import settings from a profile](#)

BoostSolutions AD Information Sync V3.5.922.0 [License Management](#)

- b. In the **Import Settings** window, click **Browse** to select a profile you want to import.

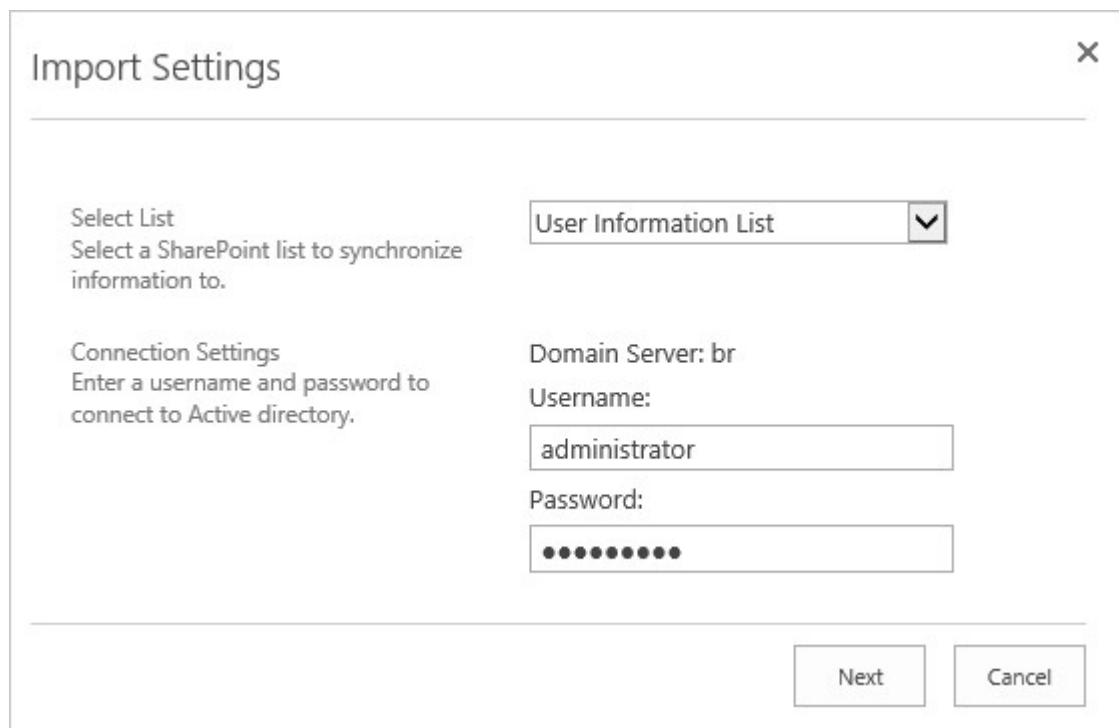


The dialog box titled "Import Settings" has a close button (X) in the top right corner. Below the title bar, there is a section labeled "Upload Profile" which contains a text input field and a "Browse..." button.

c.

Then click **Import**.

- d. In the **Select List** section, select a list to store the Active Directory information.
- e. In the **Connection Settings** section, specify the username and password to connect the domain server.



The dialog box titled "Import Settings" has a close button (X) in the top right corner. It contains two main sections: "Select List" and "Connection Settings".

Select List: This section has a label "Select List" and a description "Select a SharePoint list to synchronize information to." Below this is a dropdown menu currently showing "User Information List".

Connection Settings: This section has a label "Connection Settings" and a description "Enter a username and password to connect to Active directory." It includes a "Domain Server:" label with the value "br" next to it. Below this are two input fields: "Username:" with the value "administrator" and "Password:" with a masked password represented by dots.

At the bottom right of the dialog box, there are two buttons: "Next" and "Cancel".

- f. Click **Next** to import the settings. You will be re-directed to the **Create Profile** page.
- g. Continue to configure settings in the new profile and click **OK** to save it.

4. Supported Attributes

AD Information Sync supports the following attributes for User and Contact objects:

LDAP Name	Display Name	Available in dropdown menu
accountExpires	Account Expires	
accountNameHistory		
aCSPolicyName		
adminCount		
adminDescription		
adminDisplayName		
altSecurityIdentities		
assistant *		
attributeCertificateAttribute		
audio		
badPasswordTime *	Bad-Password-Time	
badPwdCount *	Bad Pwd Count	
businessCategory *	Business Category	
c	Country Abbreviation	Y
canonicalName *		
carLicense *		
cn *	Common Name	Y
co	Country/Region	Y
codePage		
comment	Comment	
company	Company	Y
controlAccessRights		
countryCode		
createTimeStamp *		

LDAP Name	Display Name	Available in dropdown menu
defaultClassStore *		
department	Department	Y
departmentNumber		
description	Description	Y
desktopProfile		
destinationIndicator		
directReports *	Direct Reports	Y
displayName	Display Name	Y
displayNamePrintable		
distinguishedName *	X500 Distinguished Name	
division	Division	
domainname *	Domain Name	
dSASignature		
dSCorePropagationData *		
dynamicLDAPServer *		
employeeId	Employee ID	Y
employeeNumber		
employeeType		Y
extensionName		
facsimileTelephoneNumber	Fax Number	Y
flags		
garbageCollPeriod		
gecos		
generationQualifier	Generational Suffix	
gidNumber		
givenName	First Name	Y
groupMembershipSAM		
groupPriority		
groupsTolgnore		
homeDirectory	Home Folder	

LDAP Name	Display Name	Available in dropdown menu
homeDrive	Home Drive	
homePhone	Home Phone	Y
homePostalAddress	Home Address	Y
houseIdentifier		
info	Notes	Y
initials	Initials	Y
instanceType *		
internationalISDNNumber	International ISDN Number (Others)	
ipPhone	IP Phone Number	Y
isCriticalSystemObject *		
l	City	Y
labeledURI		
lastKnownParent		
lastLogoff *		
lastLogon *		
lastLogonTimestamp *		
legacyExchangeDN		
localeID		
lockoutTime *		
loginShell		
logonCount *		
logonHours *		
logonWorkstation		
mail	E-Mail	Y
managedObjects *		
manager	Manager	
maxStorage		
memberOf *	Member of	
mhsORAddress		
middleName	Middle Name	

LDAP Name	Display Name	Available in dropdown menu
mobile	Mobile Number	Y
modifyTimeStamp *		
name *	Name	Y
networkAddress		
o		
objectCategory *		
objectClass *		
objectGUID *		
objectSid *		
objectVersion		
operatorCount		
otherFacsimileTelephoneNumber	Fax Number (Others)	Y
otherHomePhone	Home Phone (Others)	Y
otherIpPhone	IP Phone Number (Others)	Y
otherLoginWorkstations		
otherMailbox	E-Mail (Others)	
otherMobile	Mobile Number (Others)	Y
otherPager	Pager Number (Others)	Y
otherTelephone	Phone Number (Others)	Y
otherWellKnownObjects *		
organizationUnit *	Organization Unit	Y
ou *		Y
ownerBL *		
pager	Pager Number	
partialAttributeDeletionList *		
partialAttributeSet *		
personalTitle	Title	
photo		
physicalDeliveryOfficeName	Office	
postalAddress		Y

LDAP Name	Display Name	Available in dropdown menu
postalCode	ZIP/Postal Code	Y
postOfficeBox	P.O. Box	Y
preferredDeliveryMethod		
preferredLanguage		
preferredOU *		
primaryGroupID *		
primaryInternationalISDNNumber	International ISDN Number	
primaryTelexNumber	Telex Number	
profilePath		
proxyAddresses		
pwdLastSet *		
revision		
rid *		
roomNumber		
sAMAccountName	Logon Name (pre-Windows 2000)	Y
sAMAccountType *		
scriptPath		
secretary *		
seeAlso *		
serialNumber		
shadowExpire		
shadowFlag		
shadowInactive		
shadowLastChange		
shadowMax		
shadowMin		
shadowWarning		
showInAdvancedViewOnly *		
sIDHistory *		
sn	Last Name	Y

LDAP Name	Display Name	Available in dropdown menu
st	State/Province	Y
street		Y
streetAddress	Street	Y
supplementalCredentials *		
systemFlags *		
telephoneNumber	Telephone Number	Y
teletexTerminalIdentifier		
terminalServer		
textEncodedORAddress		
thumbnailLogo		Y
thumbnailPhoto		Y
title	Job Title	Y
tokenGroups *		
tokenGroupsGlobalAndUniversal *		
tokenGroupsNoGCAcceptable *		
uid		
uidNumber		
unixHomeDirectory		
url	Web Page Address (Others)	Y
userAccountControl *		Y
userCert		
userCertificate		
userParameters		
userPKCS12		
userPrincipalName *	Logon Name	Y
userSharedFolder		
userSharedFolderOther		
userSMIMECertificate		
userWorkstations	Logon Workstations	
uSNChanged *		

LDAP Name	Display Name	Available in dropdown menu
uSNCreated *		
uSNIntersite		
uSNSource		
wbemPath		
whenChanged *		
whenCreated *		
wWWHomePage	Web Page Address	Y
x121Address		
x500uniqueIdentifier		

AD Information Sync supports the following attributes for Computer objects:

LDAP Name	Display Name	Available in dropdown menu
cn *	Common Name	Y
description	Description	Y
dnshostname *	DNS Name	Y
domainname *	Domain Name	Y
location	Location	Y
managedBy	Managed By	Y
name *	Name	Y
operatingSystem	Operating System	Y
operatingSystemServicePack	Operating System Service Pack	Y
operatingSystemVersion	Operating System Version	Y
organizationUnit *	Organization Unit	Y

Note

Attributes marked with a red asterisk (*), indicates that the changes in list cannot be synced to Active Directory.

5. Troubleshooting & Support

5.1 Frequently Asked Questions

1. Is AD Information Sync one-way only? If we make any changes to the List, will they be applied to AD?

AD information sync now has two-way synchronization. Changes in list can be applied to Active Directory.

2. What are the minimum permissions required for an account to configure the settings of AD Information Sync?

You need to have the following permissions: manage web site, manage lists, add items, edit items, delete items and view items.

3. I set the Sync Schedule to indicate how often the job should be performed for this profile, but why doesn't it work?

Check whether you have activated the SharePoint AD Information Sync Timer Job in the web application feature list. When you install the software, this feature may not be activated. To activate the AD Information Sync Timer Job, go to **Central Administration > Manage web applications**; select the desired web application and click **Manage Features**; find the **AD Information Sync Timer Job** from the feature list and activate it.

4. How do I check if the sync schedule is working? Are there log files to record schedule details?

You can check the schedule through the timer job in central administration. Go to **Central Administration**; click **Monitoring** on the left side navigation bar; and finally click **Check job status** under **Timer Jobs**. Normally, the AD Information Sync Timer Job starts every one or more minutes. If the timer job does not start after some time, it may be caused by:

- Too many profiles in synchronization;
- Too many AD information items to sync;
- The AD Information Sync Timer Job does not work properly.

The reasons why the AD Information Sync Timer Job does not work properly:

- Windows SharePoint Services Timer stops;
- AD Information Sync Timer Job is disabled;
- There are problems with the timer job or profile;
- There is no log file to record the schedule details.

5. When I click **Add Profile** after installing AD Information Sync, an error occurs as follows:
"System .Null Reference Exception: Object reference not set to an instance of an object." Why?

This might occur because there is no list in the site. Create a list where you want to sync AD information to.

6. How can I filter out all disabled user objects?

In the **Filter** field, enter the following LDAP queries:

```
(&(objectClass=user)(objectCategory=person)(!(userAccountControl:1.2.840.113556.1.4.803:=2)))
```

Note: Before running a sync profile, clean the related List in advance because disabled user items in the List cannot be deleted automatically.

7. I have a **Picture or Hyperlink** column in the list, but the picture does not show up after synchronization. Why?

You need to map the column to the **Picture (thumbnailPhoto)** field and enable **Attachments** in **List Settings** (go to **List Settings>Advanced Setting**, find **Attachments**).

8. Can **AD Information Sync** sync to Lotus or Oracle?

Currently, **AD Information Sync** cannot sync to Lotus or Oracle.

9. How does this product relate to SSP? What is the difference?

AD Information Sync is different from SSP. SSP allows you to sync user information from AD to a user profile in Central Administration. With AD Information Sync you can sync user information to a SharePoint list, such as a Contact list. After installing AD Information Sync, SSP will not be affected.

10. How do you sync the Manager attribute to a list?

In the profile page, map the **Manager** attribute to a user or group column.

5.2 Contact Us

Product & Licensing Inquires: sales@boostsolutions.com

Technical Support (Basic): support@boostsolutions.com

Request a New Product or Feature: feature_request@boostsolutions.com

Appendix: License Management

You can use AD Information Sync without entering any license code for a period of 30 days from when you first use it.

To use the product after expiration, you will need to purchase a license and register the product.

Finding License Information

- a. In the products main page, click the trial link and enter the **License Management Center**.
- b. Click Download License Information, choose a license type and download the information (Server Code, Farm ID or Site Collection ID).

Download License Information

Download the license type information and send to sales@boostsolutions.com to get license.

Choose a license type

☒ Server License
Server Code: 8fa4fcbbcab9475d8b8f10d2c7b27e1e98226161275d49c683442a828de45bdd

☐ Farm License
Farm ID: {8fa4fcbb-eab9-475d-8b8f-10d2c7b27e1e}
Number of Users: 43 user(s)

☐ Site Collection License
Site Collection ID: Select a site collection
Site Collection:

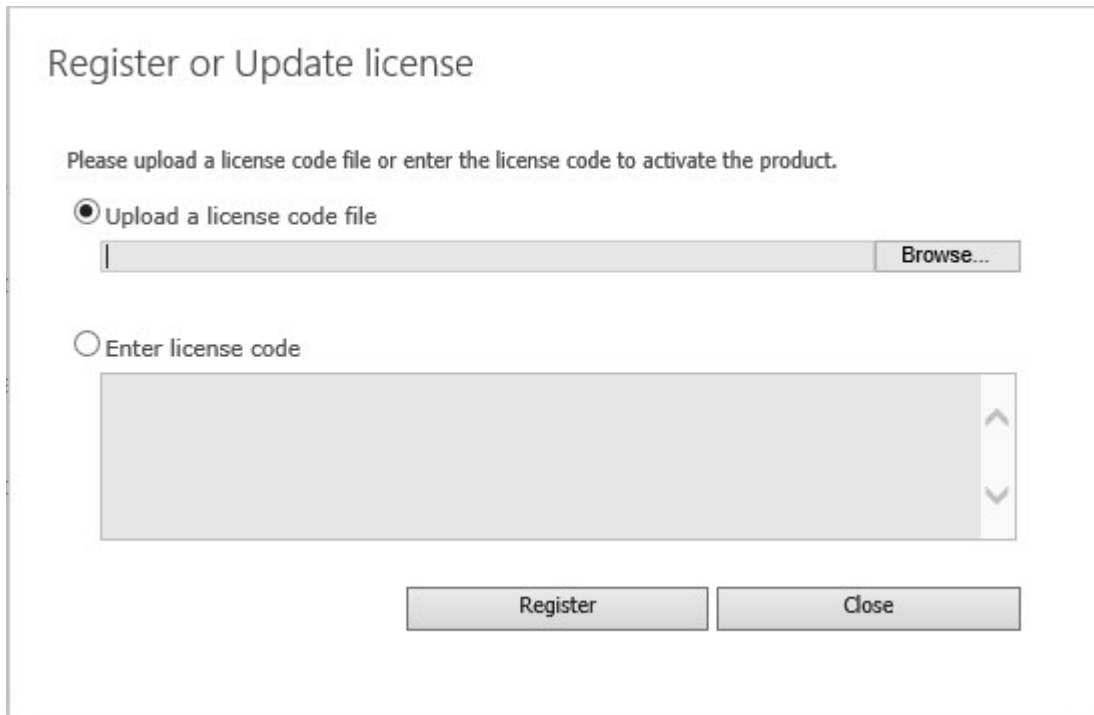
Download Close

In order for BoostSolutions to create a license for you, you need to send us your SharePoint environment identifier (Note: different license types need different information). A server license needs a server code; a Farm license needs a farm ID; and a site collection license needs a site collection ID.

- c. Send the above information to us (sales@boostsolutions.com) to generate a license code.

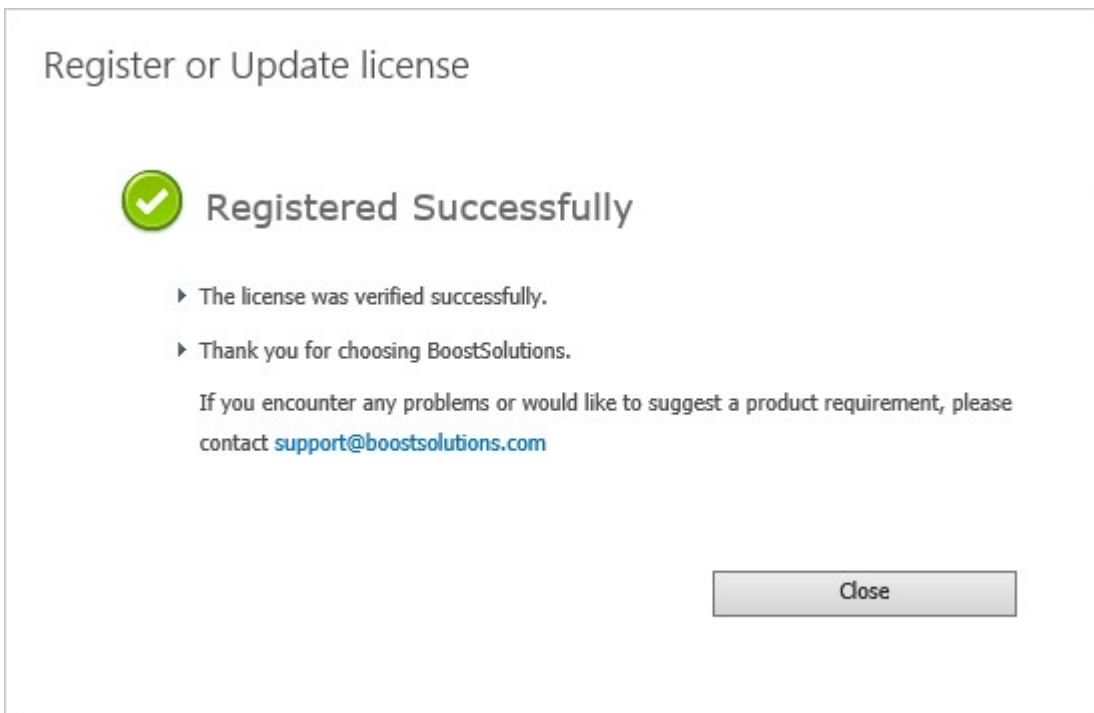
License Registration

- a. When you receive a product license code, enter the **License Management Center** page.
- b. Click **Register** on the license page and a **Register or Update license** window will open.



The dialog box is titled "Register or Update license". Below the title is the instruction: "Please upload a license code file or enter the license code to activate the product." There are two radio buttons: "Upload a license code file" (selected) and "Enter license code". The "Upload a license code file" option has a text input field and a "Browse..." button. The "Enter license code" option has a large text area with up and down arrow buttons on the right. At the bottom are two buttons: "Register" and "Close".

- c. Upload the license file or enter the license code and click **Register**. You will get confirmation that your license has been validated.



The dialog box is titled "Register or Update license". It features a green checkmark icon in a circle. Below the icon is the text "Registered Successfully". There are two bullet points: "▶ The license was verified successfully." and "▶ Thank you for choosing BoostSolutions." Below these is a paragraph: "If you encounter any problems or would like to suggest a product requirement, please contact support@boostsolutions.com". At the bottom right is a "Close" button.

For more details on license management, see [BoostSolutions Foundation](#).